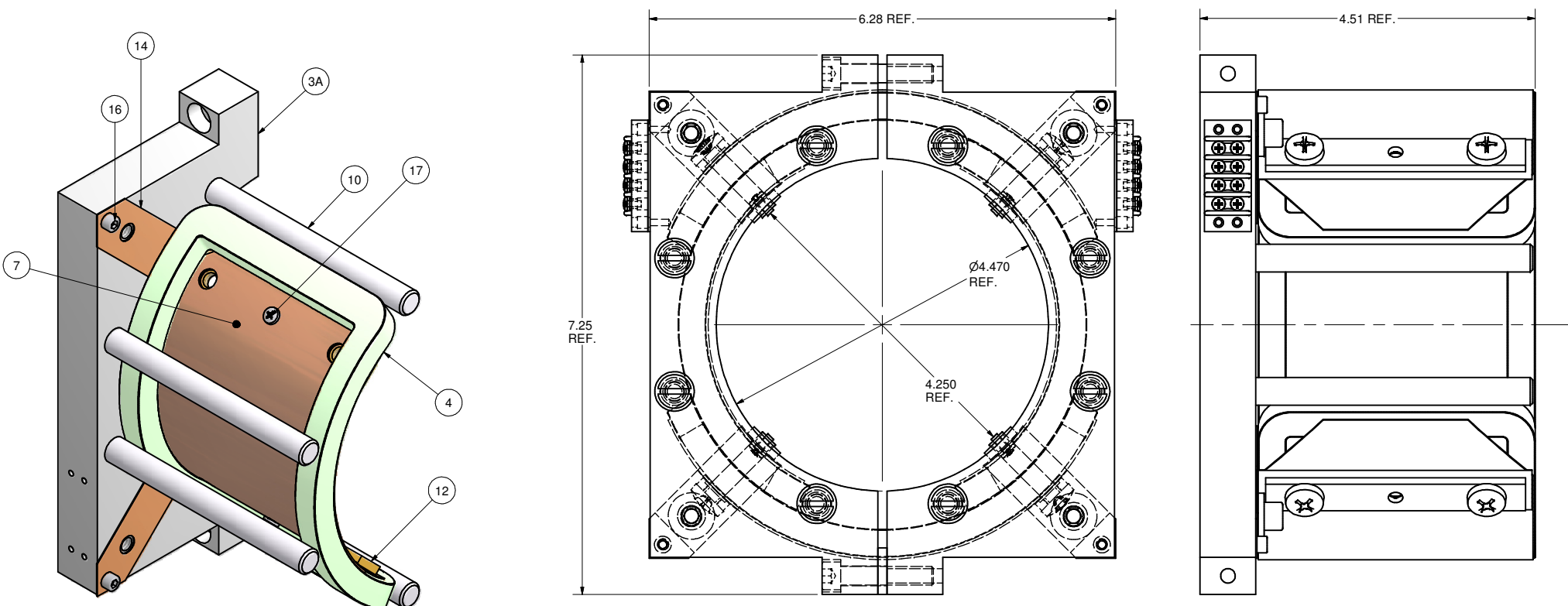
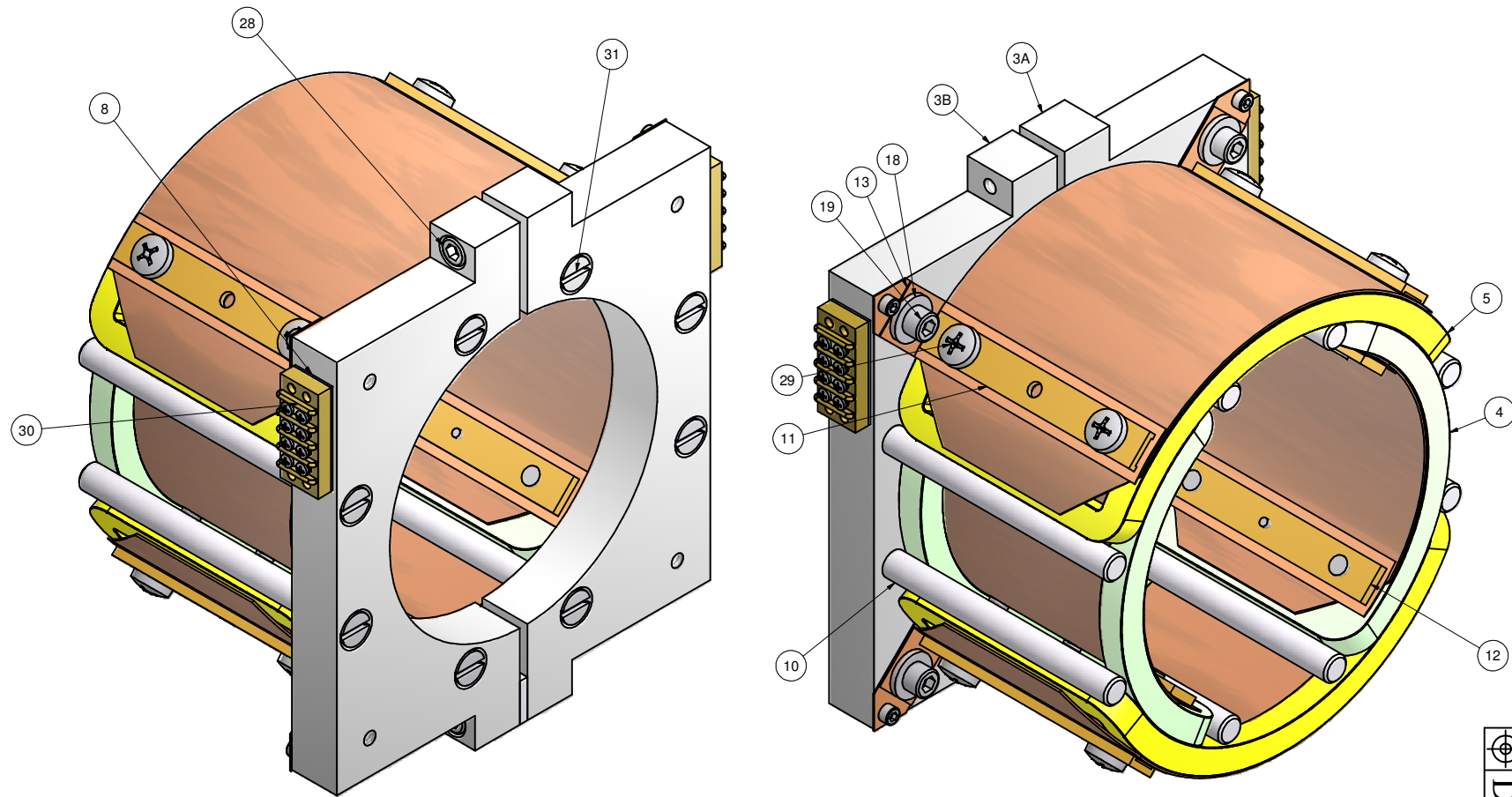


REVISIONS				
SYM.	ZONE	DESCRIPTION	DATE	APP.
A		DESIGN CHANGE - ALL PARTS NEW EXCEPT COILS SSC	11/7/07	SSC



2 HALF SECTION ASSEMBLY

FILE NAME: 7102-062
SHEET NO.: 1
DFT. SCALE: 1:1
MATERIAL: AS NOTED
QTY: 2 PER ASM
NOTES:



1 CORRECTOR FOR CRYOMODULE, ASSEMBLY

FILE NAME: 7102-062
SHEET NO.: 1
DFT. SCALE: 1:1
MATERIAL: AS NOTED
QTY: 1 PER CRYOMODULE
NOTES: 1. ITEMS 20 AND 24 NEEDED FOR COILS ITEM 4 AND 5 WINDING.

ITEM	SYM.	ZONE	DESCRIPTION	QTY	REMARKS	REV.
3B	SH.2		FLANGE CLAMP - B	1		
3A	SH.2		FLANGE CLAMP - A	1		
31	SH.1		1/4-20UNC SLOTTED FL HD MACHINE SCR x 1.25 LG.	8	NON-MAG STN STL	
30	SH.1		Kulka 410 GP 04 Double Row Terminal Block	2	Marathon	
29	SH.1		1/4-20UNC CRS REC BIND HD MACH SCR - Type I x 1.12 LG.	8	NON-MAG STN STL	
28	SH.1		1/4-20UNF HEX SOC HD CAP SCR x 1.25 LG	2	NON-MAG STN STL	
19	SH.1		1/4-20UNC HEX SOC HD CAP SCR x 1/2 LG.	4	NON-MAG STN STL	
18	SH.1		1/4 WASHER	4	NON-MAG STN STL	
17	SH.1		4-40UNC CRS REC BIND HD MACH SCR - Type I x 1/4 LG	4	NON-MAG STN STL	
16	SH.1		6-32UNC HEX SOC HD CAP SCR x 3/8 LG	4	NON-MAG STN STL	
15	SH.3		CLAMP SHIM	1		
14	SH.3		ABSORBER STRAP 2	4		
13	SH.3		ABSORBER STRAP	4		
12	SH.3		ABSORBER BRACE 2	4		
11	SH.3		ABSORBER BRACE	4		
10	SH.3		ROD	8		
8	SH.3		INSULATOR STRIP	2		
7	SH.2		INNER ABSORBER	2		
6	SH.2		OUTER ABSORBER	2		
5	SH.4		LARGE COIL	2		
4	SH.4		SMALL COIL	2		

D

PRINT
DISTR.

7102-062

SH. NO. 1 OF 6

REV. A

PLOT DATE: 11/12/2007
CAD FILE NAME: 7102-062.idw

UNLESS OTHERWISE SPECIFIED:
DIMENSIONS ARE IN INCHES:
TOLERANCES ON:
.00 ± .010
.000 ± .005
FRACTIONS ± 1/64
ANGLES ± 0.5°
ALL SURFACES

CORNELL UNIVERSITY
LABORATORY FOR ELEMENTARY-PARTICLE PHYSICS

CORNELL UNIVERSITY
Floyd R. Newman Laboratory
Ithaca, NY 14853

ERL Phase I, Corrector for Cryomodule
Assembly

CHECKED BY: Yulin Li
APPROVED BY: Yulin Li

DRAWN BY: TMK
DRAWN FOR: YL

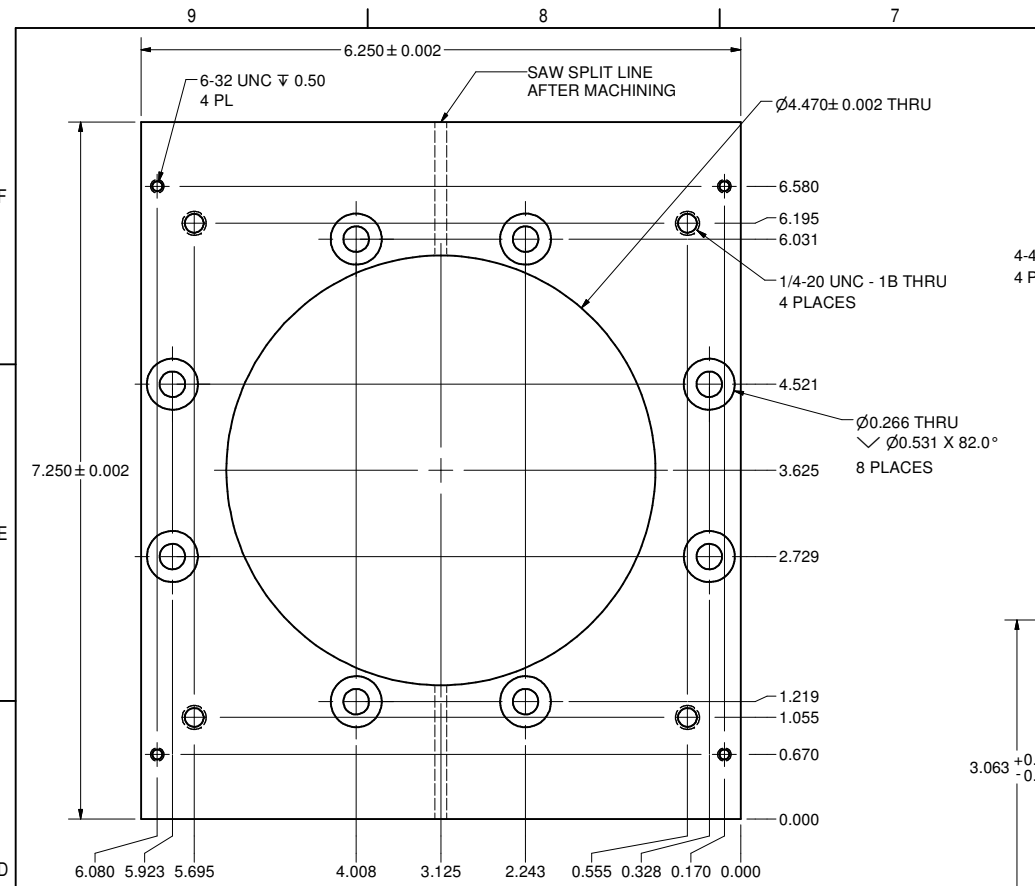
DATE: 1/10/2007

SCALE: D

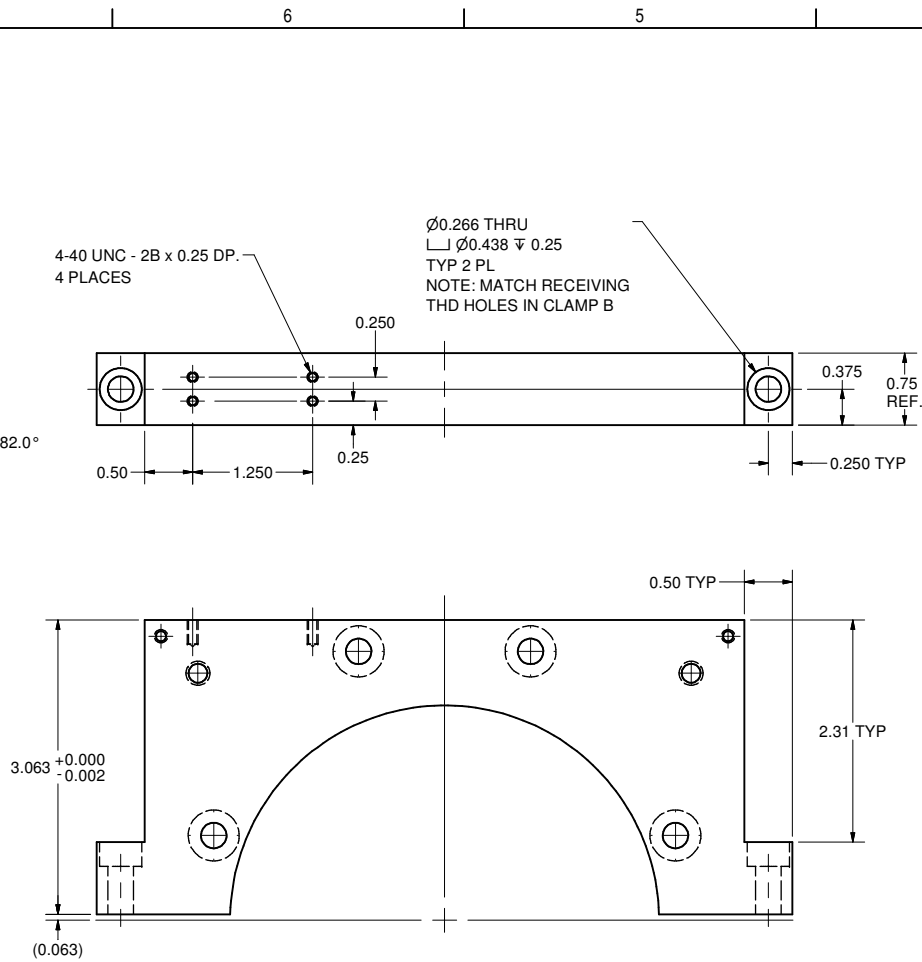
7102-062
SH. NO. 1 OF 6

REV. A

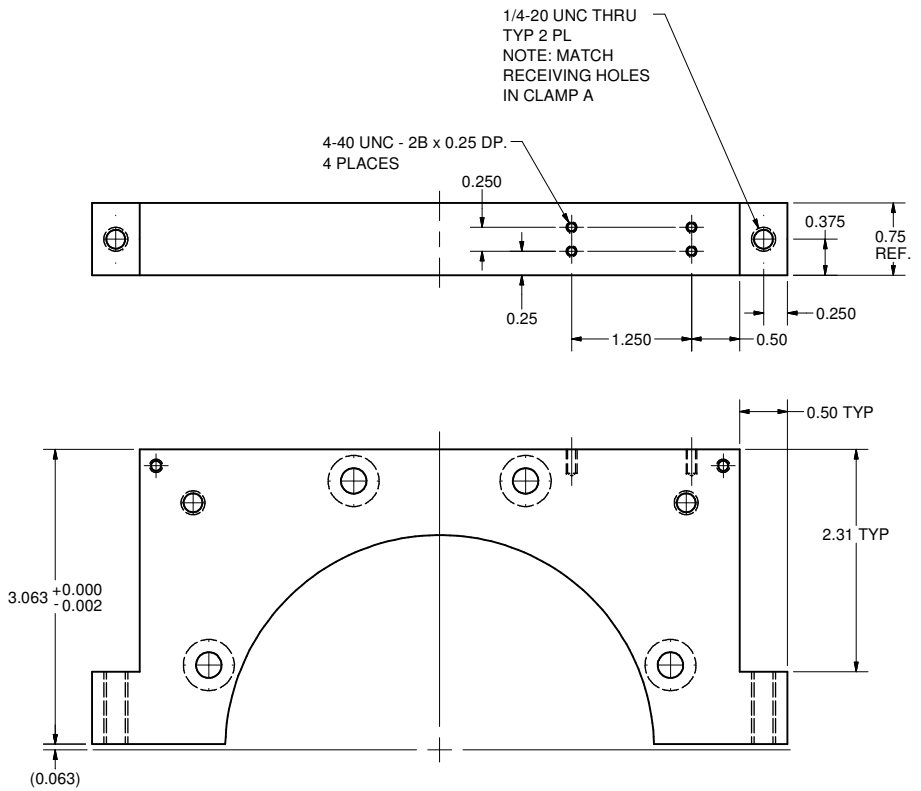
REVISIONS				
SYM.	ZONE	DESCRIPTION	DATE	APP.
A		DESIGN CHANGE - ALL PARTS NEW - TITLE BLOCK SUB-TITLE CHANGED	11/7/07	SSC



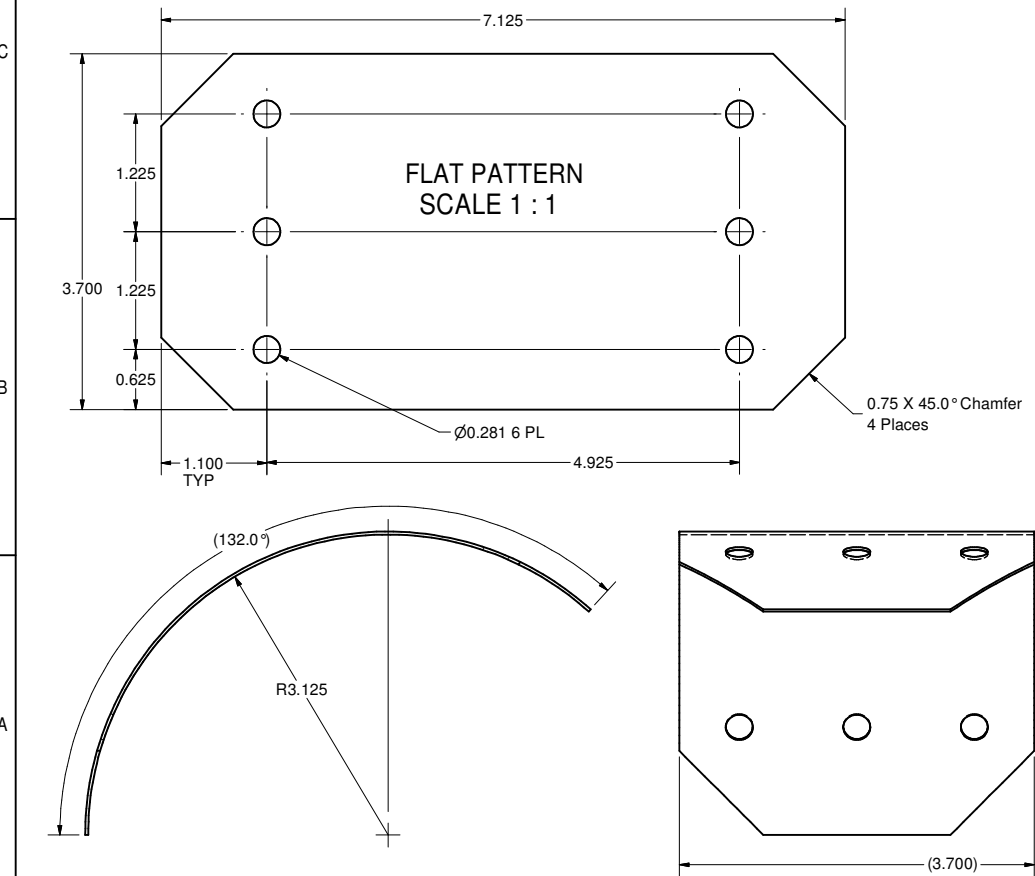
3 Flange Clamp Blank
FILE NAME: 7102-062
SHEET NO.: 2
DFT. SCALE: 1:1
MATERIAL: 3/4"THK. 6061-T6 Al plate
QTY: 1
NOTES: SAW CUT AS SHOWN AFTER MACHINING.
USE TO MAKE 3A + 3B (THIS SHEET)



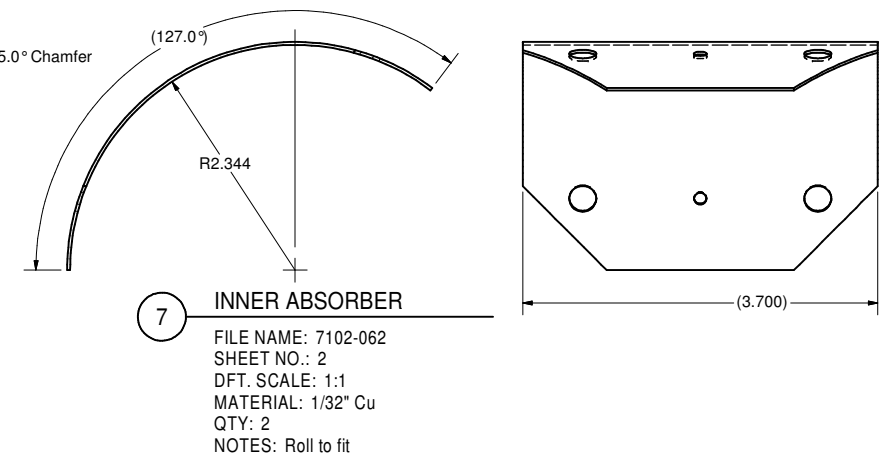
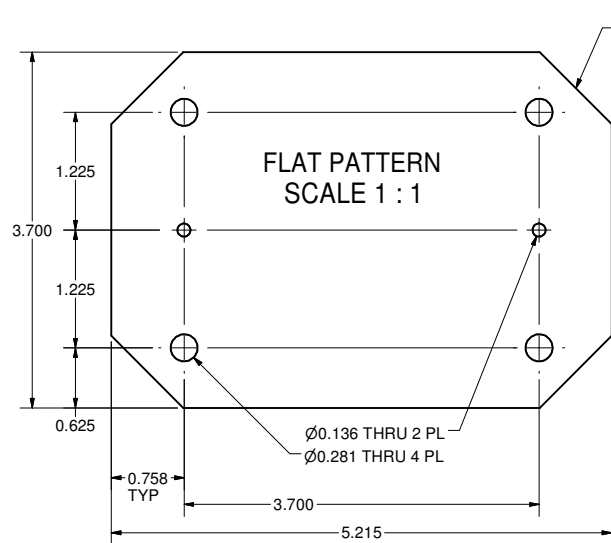
3A Flange Clamp A
FILE NAME: 7102-062
SHEET NO.: 2
DFT. SCALE: 1:1
MATERIAL: 6061-T6 Al (REF.)
QTY: 1
NOTES: MAKE FROM PT.3








3B Flange Clamp B
FILE NAME: 7102-062
SHEET NO.: 2
DFT. SCALE: 1:1
MATERIAL: 6061-T6 Al (REF.)
QTY: 1
NOTES: MAKE FROM PT.3



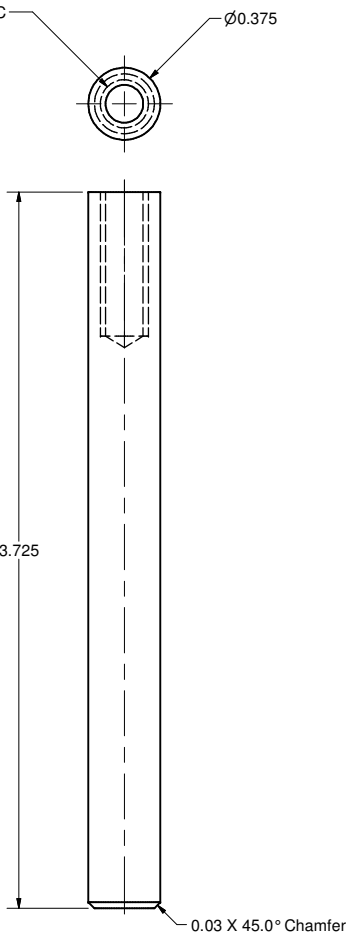
6 OUTER ABSORBER
FILE NAME: 7102-062
SHEET NO.: 2
DFT. SCALE: 1:1
MATERIAL: 1/32" Cu
QTY: 2
NOTES: Roll to fit



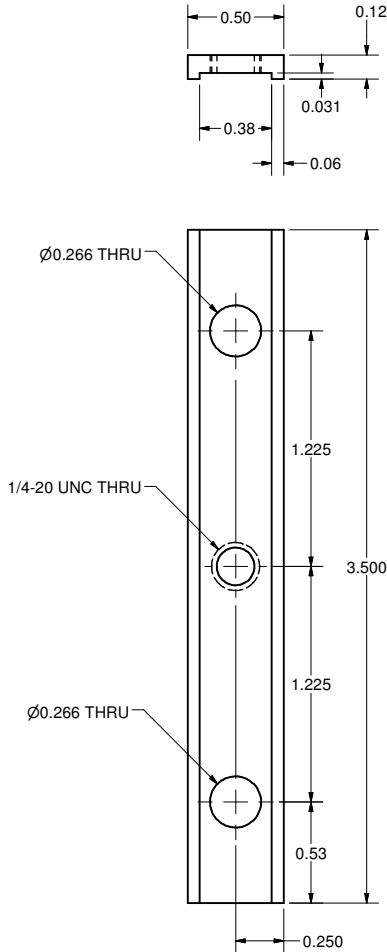
7 INNER ABSORBER
FILE NAME: 7102-062
SHEET NO.: 2
DFT. SCALE: 1:1
MATERIAL: 1/32" Cu
QTY: 2
NOTES: Roll to fit

	ITEM	DWG. NO.	DESCRIPTION			G1	G2	G3	REMARKS	REV.
							QUANTITY			
	PRINT DISTR.	PLOT DATE: 11/12/2007 CAD FILE NAME: 7102-062.idw								
	CR-1	UNLESS OTHERWISE SPECIFIED: DIMENSIONS ARE IN INCHES: TOLERANCES ON: .00 ± .010 .000 ± .005 FRACTIONS ± 1/64 ANGLES ± 0.5° ALL SURFACES ✓	<div><div> </div><div>CORNELL UNIVERSITY Floyd R. Newman Laboratory Ithaca, NY 14853</div><div>LABORATORY FOR ELEMENTARY-PARTICLE PHYSICS</div></div>							
			ERL Phase I, Corrector for Cryomodule Clamp Details, MKII							
SH NO. 2 OF 6	7102-062									
REV. A	CHECKED BY: Yulin Li	DRAWN BY: TMK	DRAWN FOR: YL	DATE: 1/10/2007	SCALE		7102-062		REV. A	
	APPROVED BY: Yulin Li						SH. NO. 2 OF 6			

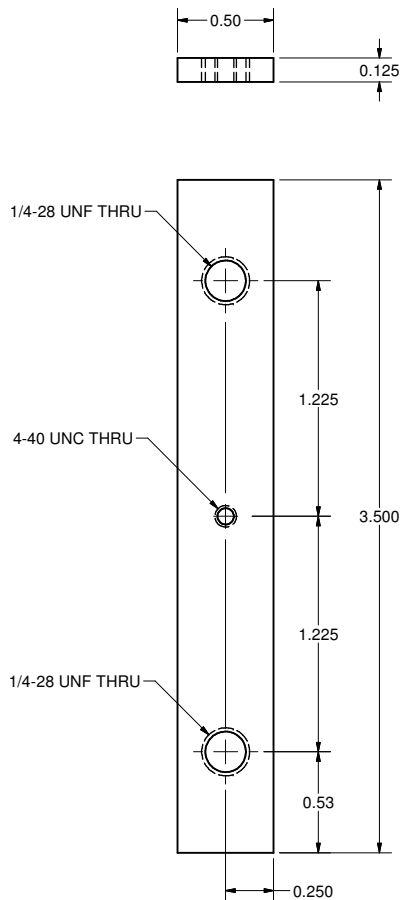
REVISIONS				
SYM.	ZONE	DESCRIPTION	DATE	APP.
A		DESIGN CHANGE - ALL PARTS NEW EXCEPT PT.8 - TITLE BLOCK SUB-TITLE CHANGED	11/7/07	SSC



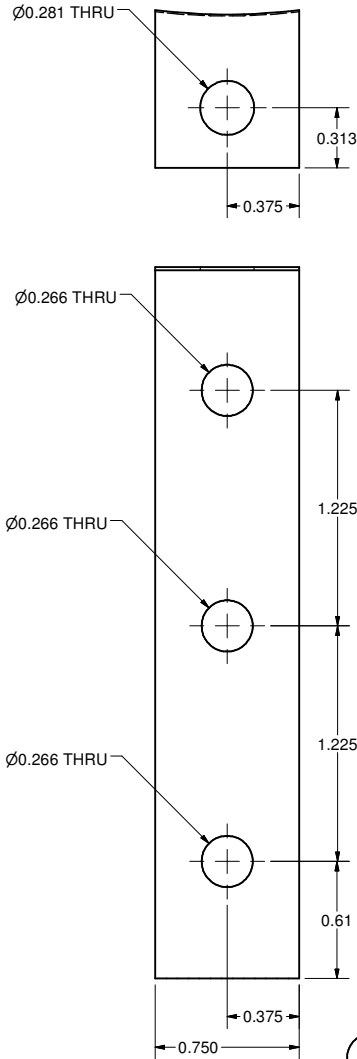
10 Rod
FILE NAME: 7102-062
SHEET NO.: 3
DFT. SCALE: 2:1
MATERIAL: 6061-T6 Al
QTY: 6
NOTES: Ends faced smooth and perpendicular to axis



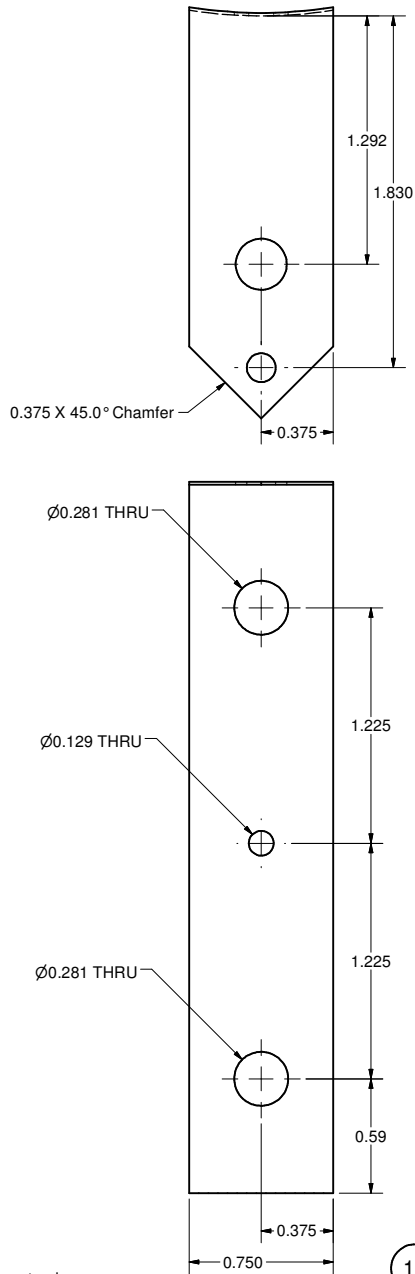
11 Absorber Brace
FILE NAME: 7102-062
SHEET NO.: 3
DFT. SCALE: 2:1
MATERIAL: Brass
QTY: 4
NOTES:



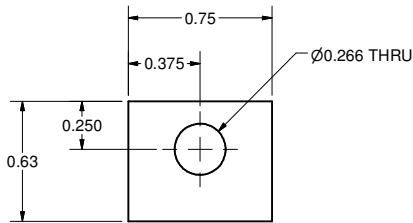
12 Absorber Brace 2
FILE NAME: 7102-062
SHEET NO.: 3
DFT. SCALE: 2:1
MATERIAL: Brass
QTY: 4
NOTES:



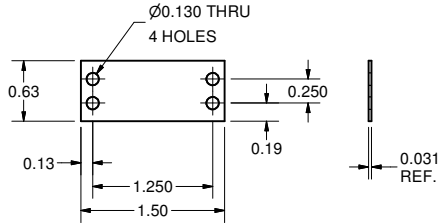
13 Absorber Strap
FILE NAME: 7102-062
SHEET NO.: 3
DFT. SCALE: 2:1
MATERIAL: 1/64" Cu
QTY: 4
NOTES: Machine for fit as assembly
Item shown as modeled.
Model cannot be 'flattened' to create view.



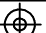



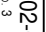
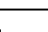
14 Absorber Strap 2
FILE NAME: 7102-062
SHEET NO.: 3
DFT. SCALE: 2:1
MATERIAL: 1/64" Cu
QTY: 4
NOTES: Machine for fit at assembly
Item shown as modeled.
Model cannot be 'flattened' to create view.



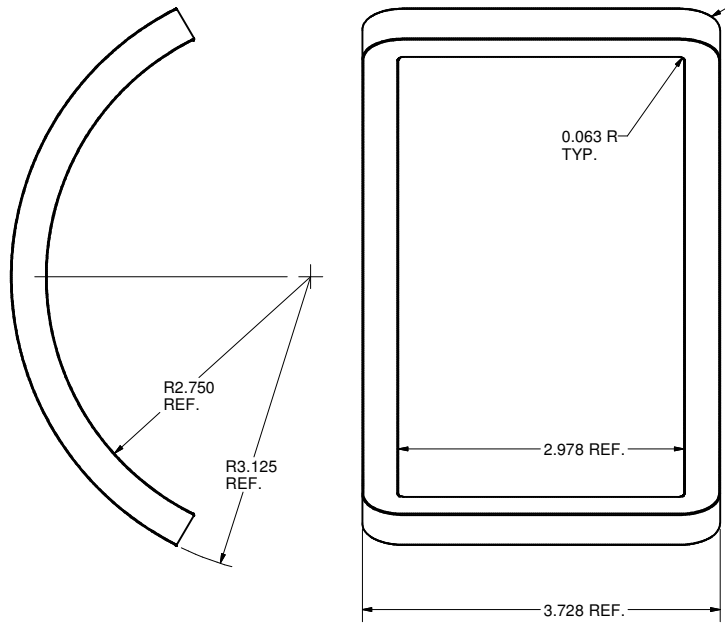
15 Clamp Shim
FILE NAME: 7102-062
SHEET NO.: 3
DFT. SCALE: 2:1
MATERIAL: 1/8" 6061-T6 Al
QTY: 1
NOTES:



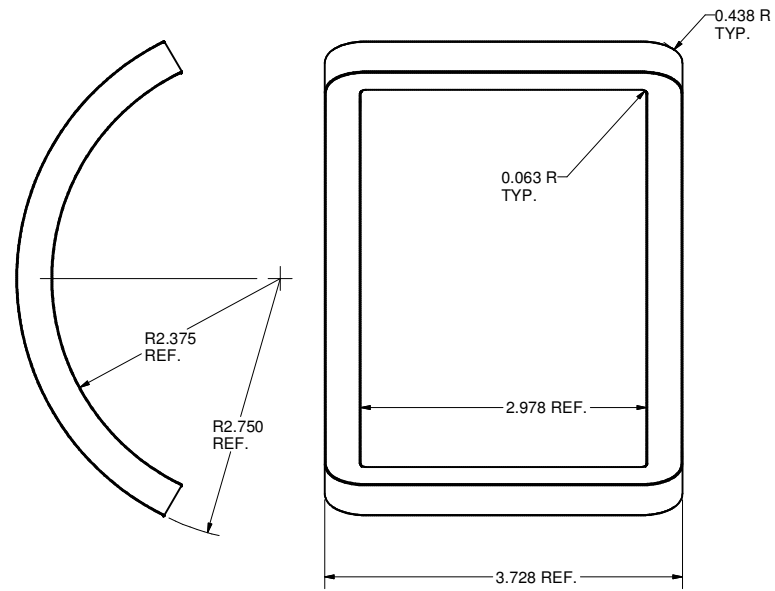
8 INSULATOR STRIP
FILE NAME: 7102-062
SHEET NO.: 3
DFT. SCALE: 1:1
MATERIAL: 1/32" G-10 SHEET
QTY: 2 PER ASSEMBLY
NOTES: NOT SHOWN IN ASM

	ITEM	DWG. NO.	DESCRIPTION			G1	G2	G3	REMARKS	REV.
				QUANTITY						
	PRINT DISTR.	PLOT DATE: 11/12/2007 CAD FILE NAME: 7102-062.idw								
	 SH. NO. 3 OF 6	CR-1	UNLESS OTHERWISE SPECIFIED: DIMENSIONS ARE IN INCHES: TOLERANCES ON: .00 ± .010 .000 ± .005 FRACTIONS ± 1/64 ANGLES ± 0.5° ALL SURFACES ✓	CORNELL UNIVERSITY  CORNELL UNIVERSITY Floyd R. Newman Laboratory Ithaca, NY 14853 LABORATORY FOR ELEMENTARY-PARTICLE PHYSICS						
ERL Phase I, Corrector for Cryomodule Clamp Details, MKII										
				CHECKED BY: Yulin Li	DRAWN BY	DRAWN FOR	DATE	SCALE		7102-062 SH. NO. 3 OF 6
	APPROVED BY: Yulin Li	TMK	YL	1/10/2007						

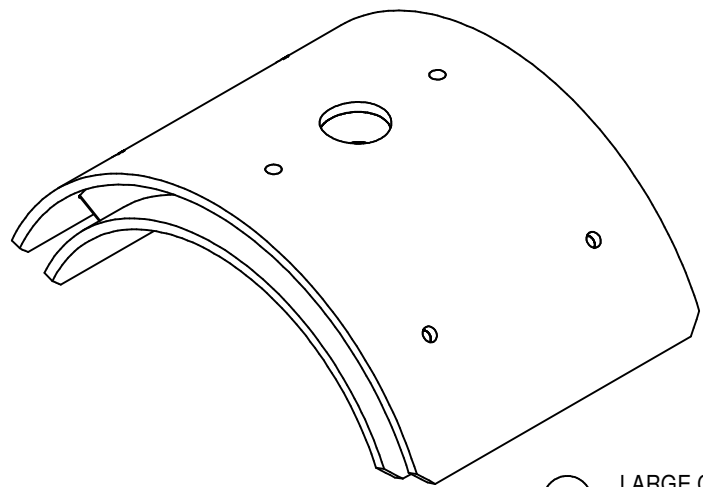
REVISIONS			
SYM.	ZONE	DESCRIPTION	DATE APP.



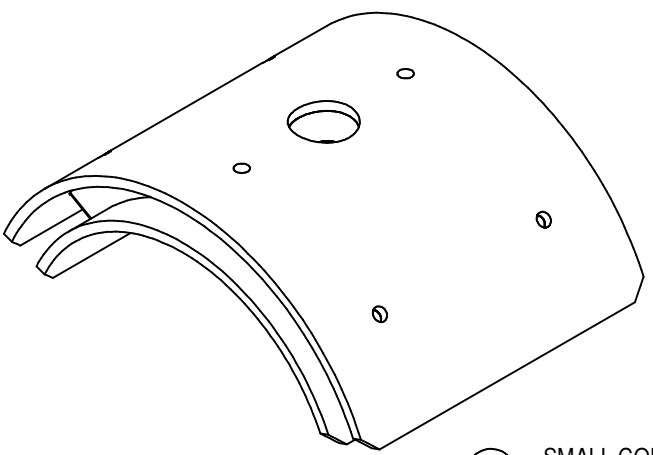
5 **LARGE COIL**
FILE NAME: 7102-062
SHEET NO.: 4
DFT. SCALE: 1:1
MATERIAL: #20 COPPER MAGNET WIRE - HIGH TEMP INSULATION - EPOXY PAINTED
QTY: 2 PER ASM.
NOTES: 10x10 TURNS (SEE J. KANDASWAMY-LEPP)



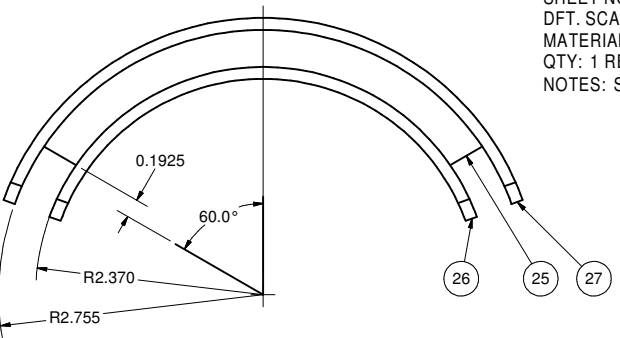
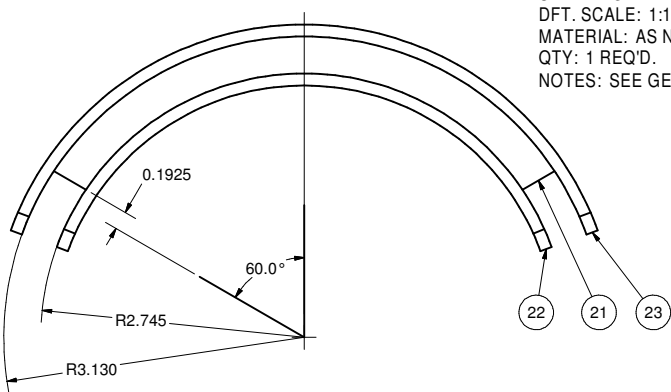
4 **SMALL COIL**
FILE NAME: 7102-062
SHEET NO.: 4
DFT. SCALE: 1:1
MATERIAL: #20 Copper Magnet Wire - HIGH TEMP. INSULATION - EPOXY PAINTED
QTY: 2 PER ASM
NOTES: 10x10 TURNS (SEE J. KANDASWAMY-LEPP)



20 **LARGE COIL WINDING FIXTURE**
FILE NAME: 7102-062
SHEET NO.: 4
DFT. SCALE: 1:1
MATERIAL: AS NOTED
QTY: 1 REQ'D.
NOTES: SEE GENERAL NOTES



24 **SMALL COIL WINDING FIXTURE**
FILE NAME: 7102-062
SHEET NO.: 4
DFT. SCALE: 1:1
MATERIAL: AS NOTED
QTY: 1 REQ'D.
NOTES: SEE GENERAL NOTES

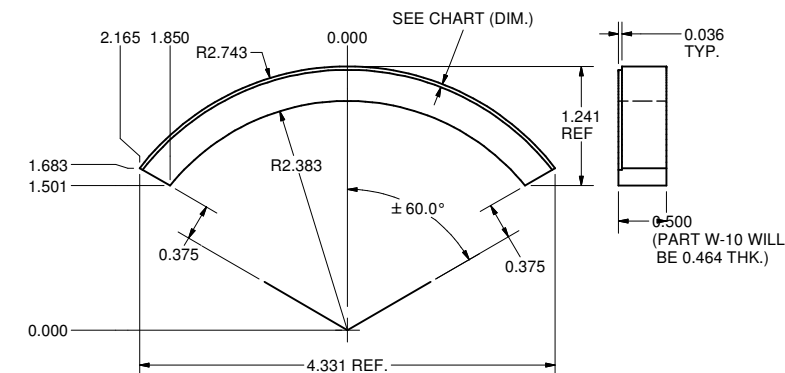
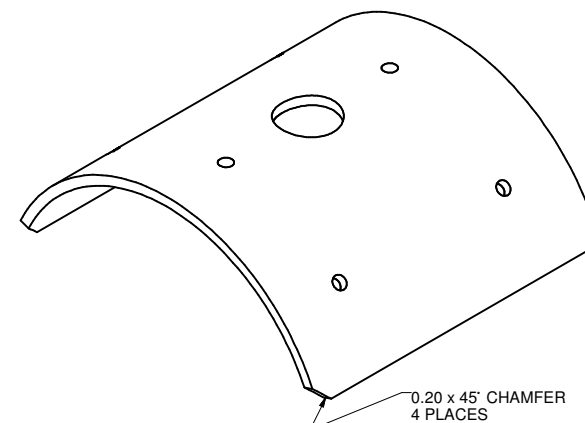
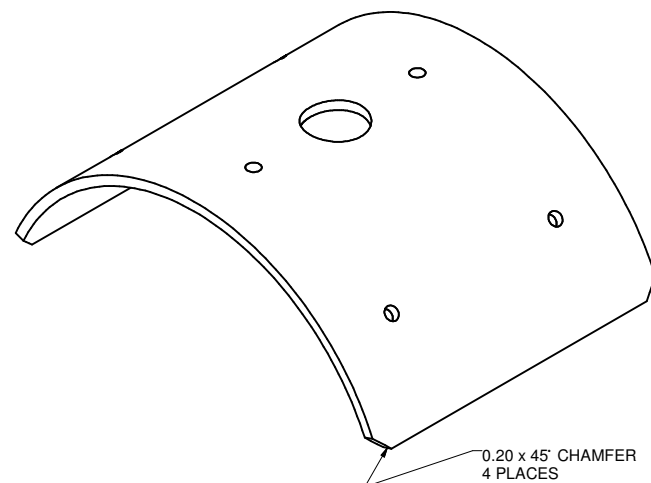
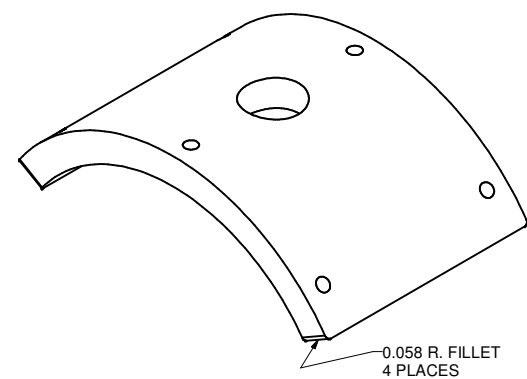


1. DESIGN REQUIRES .005" THK. KAPTON TAPE EVERYWHERE TOUCHED BY COIL TO MEET FINAL DIMENSIONS AND TO AVOID STICKING.
2. SUB-ASMS ON THIS SHEET ARE FASTENED WITH #8-32 UNC SCREWS OF APPROX. 1.00" LONG AND APPROPRIATE WASHERS AND NUTS. SEE BUZZ METZLER - LEPP
3. PART 20 USES PARTS WB+F2 (SH.6) TO HELP WIND COILS.
4. PART 24 USES PARTS WS+F1 (SH.5) TO HELP WIND COILS.

23	Sheet 6	Large Inner Plate	1					
22	Sheet 6	Large Outer Plate	1					
21	Sheet 6	Large Winding Plate	1					
20	Sheet 4	LARGE COIL WINDING FIXTURE	X					

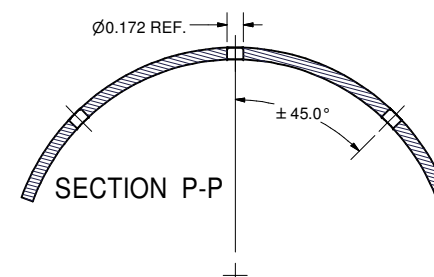
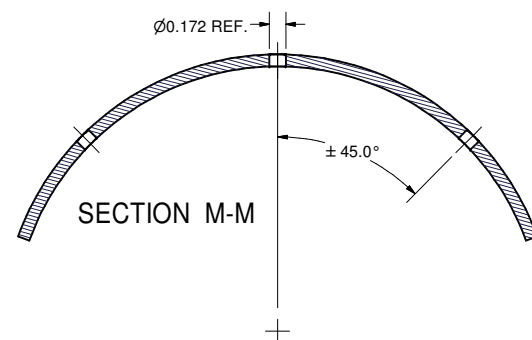
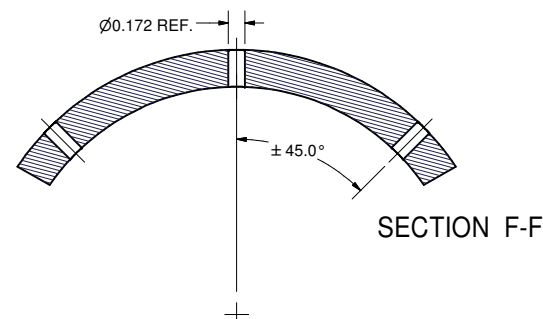
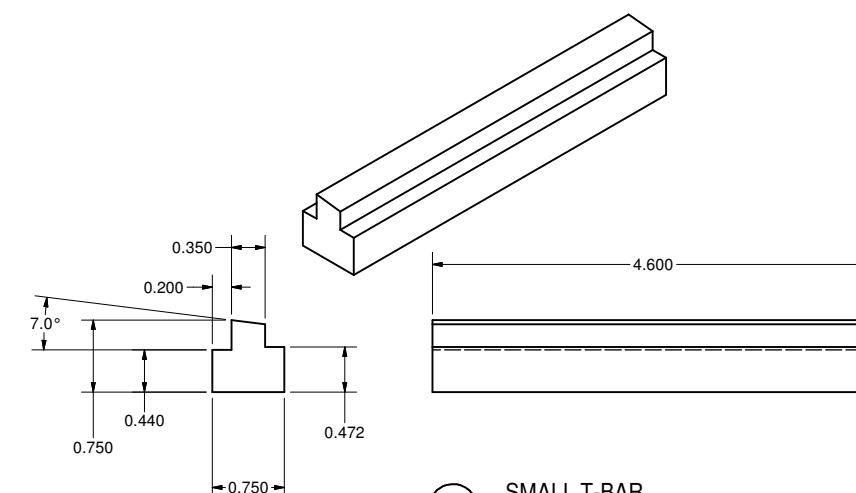
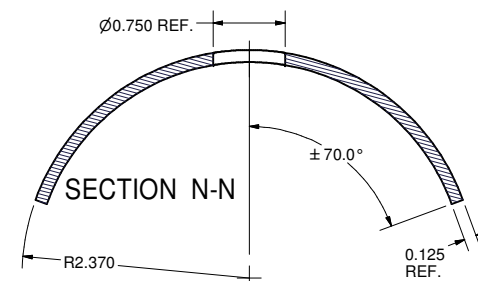
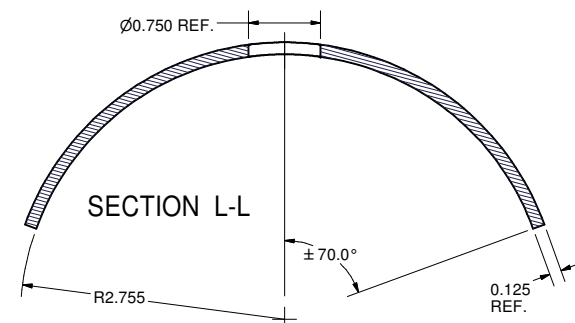
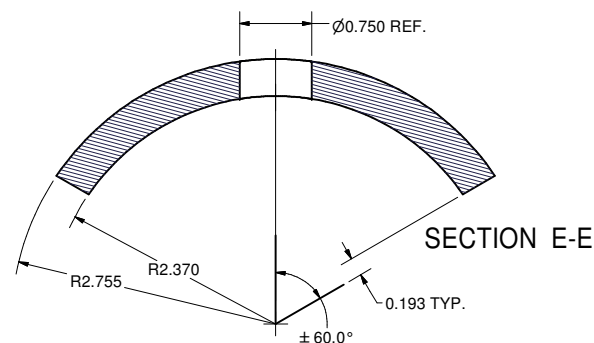
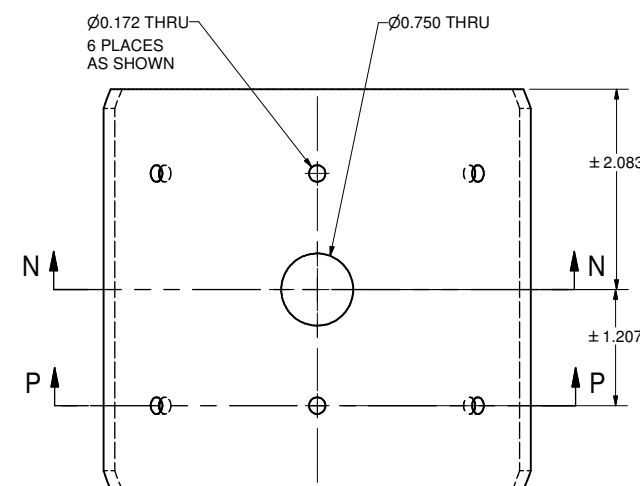
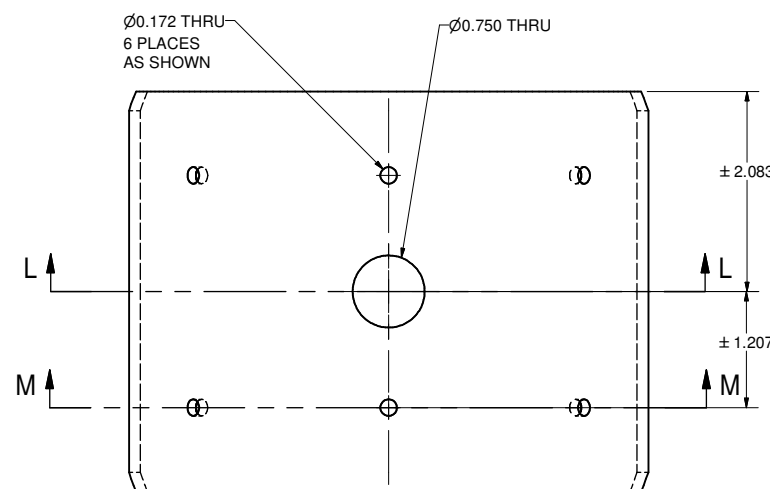
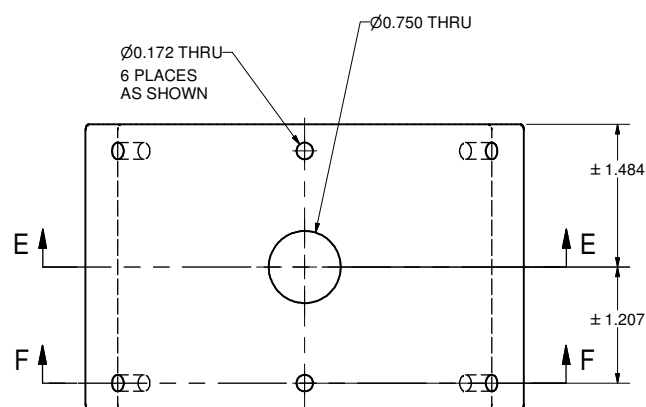
27	Sheet 5	Small Inner Plate	1					
26	Sheet 5	Small Outer Plate	1					
25	Sheet 5	Small Winding Plate	1					
24	Sheet 4	SMALL COIL WINDING FIXTURE	X					

D	PRINT DISTR.	ITEM	DWG. NO.	DESCRIPTION			G1	G2	G3	REMARKS	REV.
		PLOT DATE: 11/12/2007 CAD FILE NAME: 7102-062.idw			QUANTITY						
SH. NO. 4 OF 6	7102-062	CR-1	UNLESS OTHERWISE SPECIFIED: DIMENSIONS ARE IN INCHES: TOLERANCES ON: .00 ± .010 .000 ± .005 FRACTIONS ± 1/64 ANGLES ± 0.5° ALL SURFACES		CORNELL UNIVERSITY LEPP LABORATORY FOR ELEMENTARY-PARTICLE PHYSICS CORNELL UNIVERSITY Floyd R. Newman Laboratory Ithaca, NY 14853 ERL Phase I, Corrector for Cryomodule Coil Winding Fixtures, Sub-Asms.						
			CHECKED BY: Yulin Li APPROVED BY: Yulin Li		DRAWN BY TMK	DRAWN FOR YL	DATE 1/10/2007	SCALE D	7102-062 SH. NO. 4 OF 6	REV.	



PART	DIM.
W-01	0.036
W-02	0.072
W-03	0.108
W-04	0.144
W-05	0.180
W-06	0.216
W-07	0.252
W-08	0.288
W-09	0.324
W-10	0.360 (SAME AS I.R.)

WS **GUN COIL SMALL FIXTURE**
 FILE NAME: 7102-062
 SHEET NO.: 5
 DFT. SCALE: 1:1
 MATERIAL: 1/2" THK. TEFLON
 QTY: 20 (2 EACH FROM CHART)
 NOTES: FOR USE IN WINDING COILS.
 NOT USED IN FINAL ASM.



25 SMALL WINDING PLATE

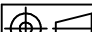




FILE NAME: 7102-062
 SHEET NO.: 5
 DFT. SCALE: 1:1
 MATERIAL: ALUM
 QTY: 1 REQ'D
 NOTES:

26 SMALL OUTER PLATE

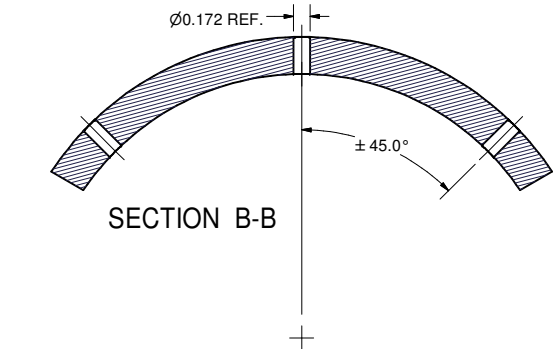
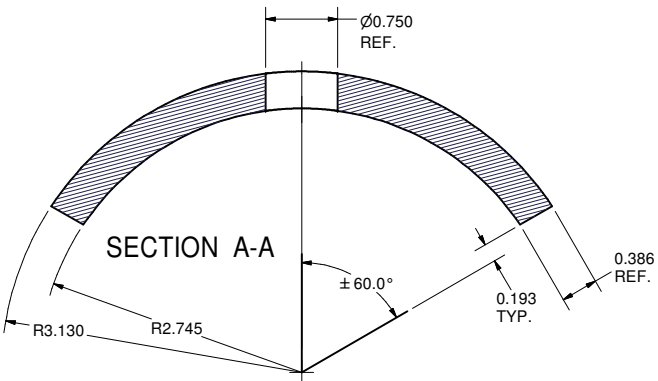
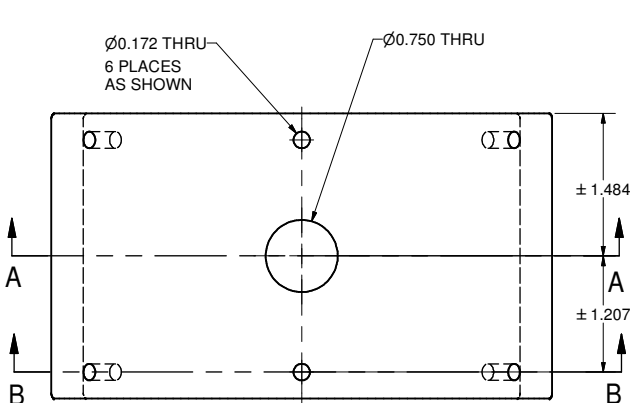
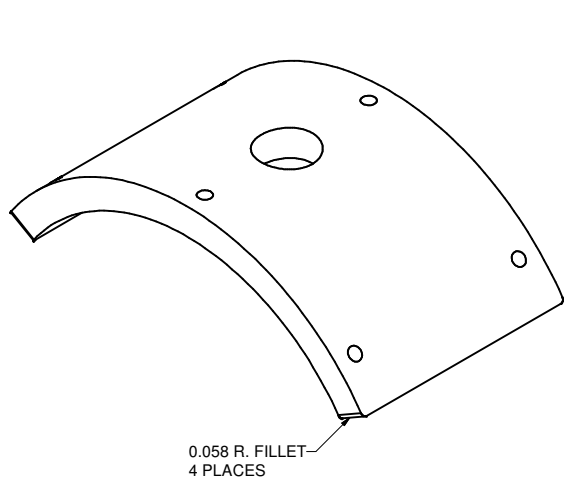
FILE NAME: 7102-062
 SHEET NO.: 5
 DFT. SCALE: 1:1
 MATERIAL: .125 THK. 6061-T6 ALUM.
 QTY: 1 REQ'D.
 NOTES:

27 SMALL INNER PLATE

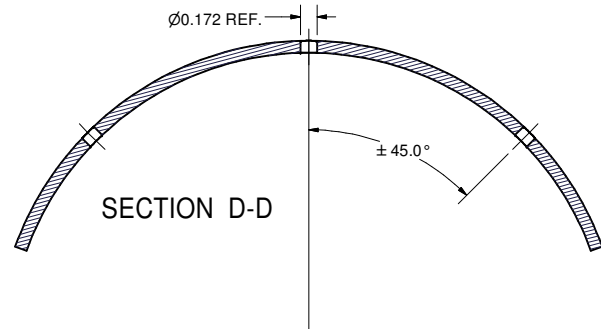
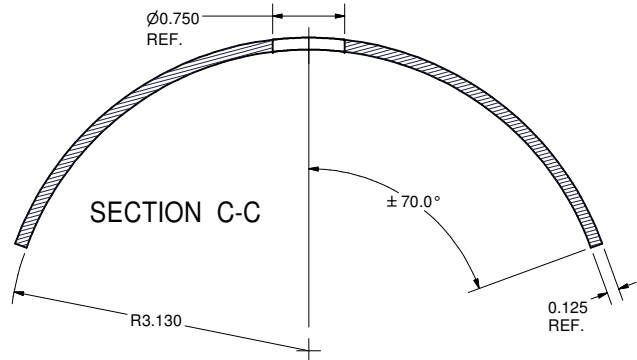
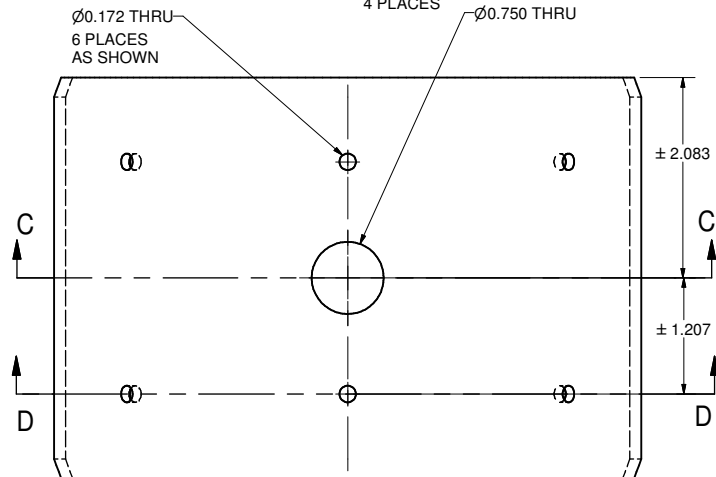
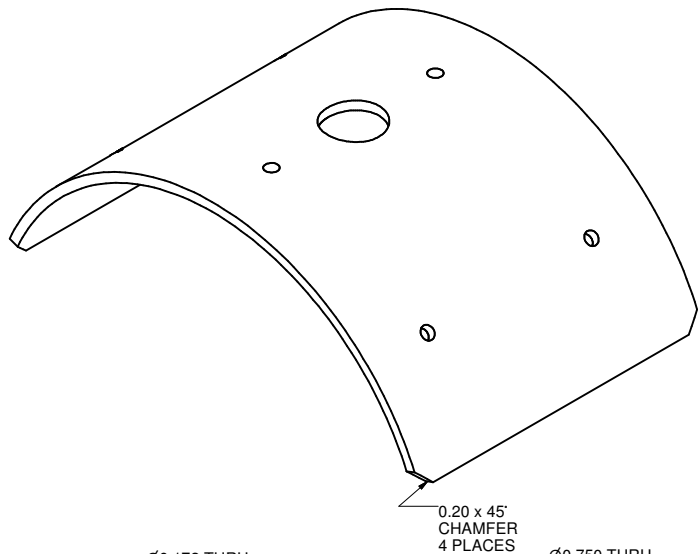
FILE NAME: 7102-062
SHEET NO.: 5
DFT. SCALE: 1:1
MATERIAL: .125 THK. 6061-T6 ALUM.
QTY:
NOTES:

	ITEM	DWG. NO.	DESCRIPTION			G1	G2	G3	REMARKS	REV.
							QUANTITY			
	PRINT DISTR.	PLOT DATE: 11/12/2007 CAD FILE NAME: 7102-062.idw								
SH. NO. 5 OF 6	7102-062 OF 6	CR-1 UNLESS OTHERWISE SPECIFIED: DIMENSIONS ARE IN INCHES: TOLERANCES ON: .00 ±0.10 .000 ±.005 FRACTIONS 1/164 ANGLES ±0.5° ALL SURFACES ✓	<div><div><p>CORNELL UNIVERSITY LABORATORY FOR ELEMENTARY-PARTICLE PHYSICS</p></div><div><p>LEPP LABORATORY FOR ELEMENTARY-PARTICLE PHYSICS</p></div><div>CORNELL UNIVERSITY Floyd R. Newman Laboratory Ithaca, NY 14853</div></div>							
			ERL Phase I, Corrector for Cryomodule Corrector Small Coil Winding Jig Details							
REV.	CHECKED BY: Yulin Li	DRAWN BY	DRAWN FOR	DATE	SCALE		7102-062 SH. NO. 5 OF 6	REV.		
	APPROVED BY: Yulin Li	TMK	YL	1/10/2007						

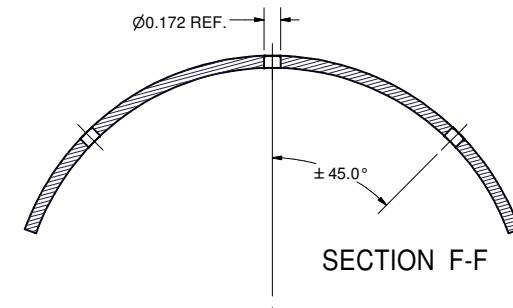
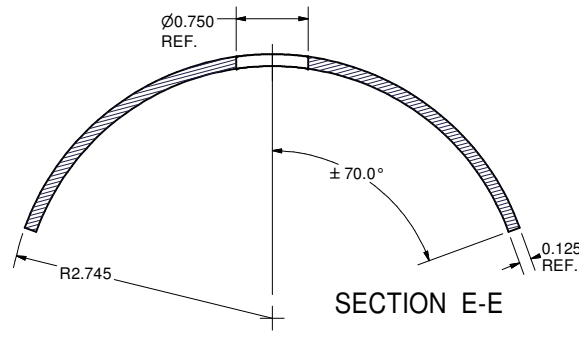
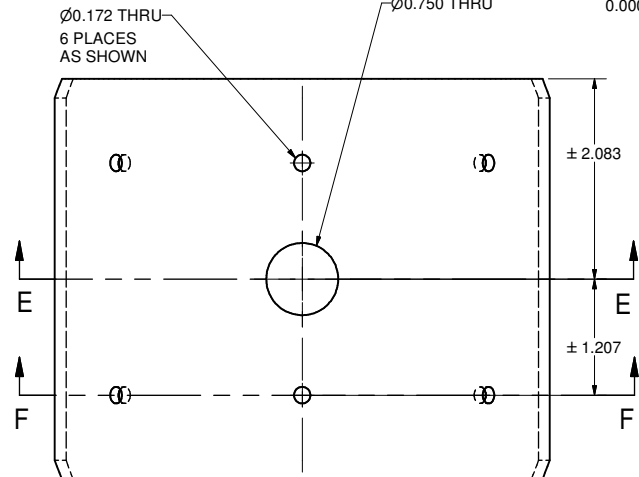
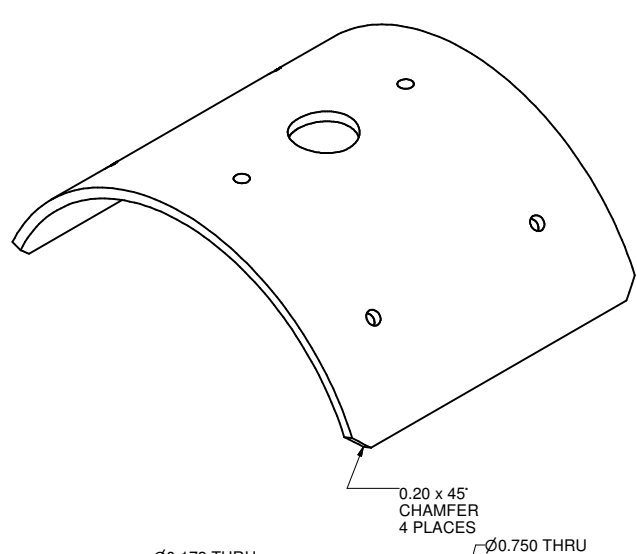
REVISIONS			
SYM.	ZONE	DESCRIPTION	DATE APP.



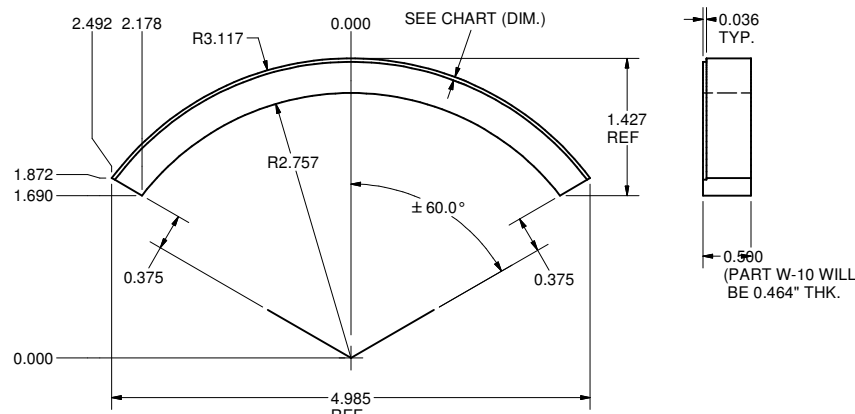
21 LARGE WINDING PLATE
FILE NAME: 7102-062
SHEET NO.: 6
DFT. SCALE: 1:1
MATERIAL: ALUM
QTY: 1 REQ'D.
NOTES:



22 LARGE OUTER PLATE
FILE NAME: 7102-062
SHEET NO.: 6
DFT. SCALE: 1:1
MATERIAL: .125" THK. 6061-T6 ALUM.
QTY: 1 REQ'D.
NOTES:

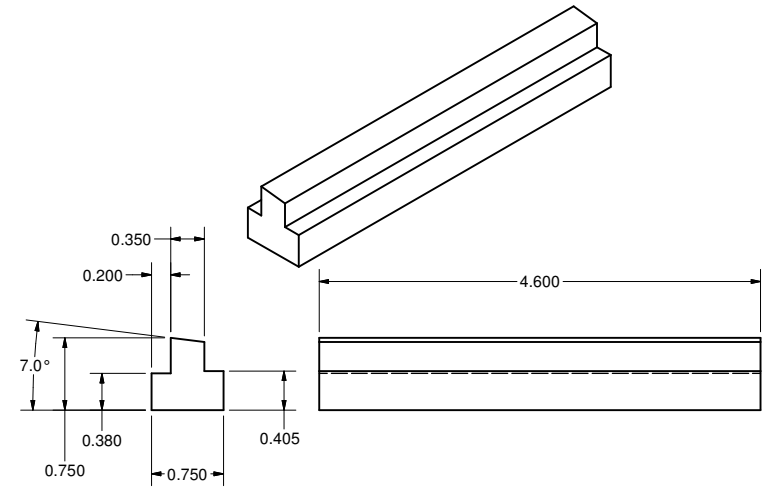


23 LARGE INNER PLATE
FILE NAME: 7102-062
SHEET NO.: 6
DFT. SCALE: 1:1
MATERIAL: .125 THK. 6061-T6 ALUM
QTY: 1 REQ'D.
NOTES:







PART	DIM.
W-01	0.036
W-02	0.072
W-03	0.108
W-04	0.144
W-05	0.180
W-06	0.216
W-07	0.252
W-08	0.288
W-09	0.324
W-10	0.360 (SAME AS I.R.)

WB GUN COIL BIG FIXTURE
FILE NAME: 7102-062
SHEET NO.: 6
DFT. SCALE: 1:1
MATERIAL: 1/2" THK. TEFLON
QTY: 20 (2 OF EACH FROM CHART)
NOTES: FOR USE IN WINDING COILS.
NOT USED IN FINAL ASM.



F2 BIG T-BAR
FILE NAME: 7102-062
SHEET NO.: 6
DFT. SCALE: 1:1
MATERIAL: AL
QTY: 2
NOTES: FOR USE IN WINDING COILS.
NOT USED IN FINAL ASM.

	ITEM	DWG. NO.	DESCRIPTION			G1	G2	G3	REMARKS	REV.	
							QUANTITY				
 7102-062 SH. NO. 6 OF 6	PRINT DISTR.	PLOT DATE: 11/12/2007 CAD FILE NAME: 7102-062.idw									
	CR-1	UNLESS OTHERWISE SPECIFIED: DIMENSIONS ARE IN INCHES: TOLERANCES ON: .00 ± .010 .000 ± .005 FRACTIONS ± 1/64 ANGLES ± 0.5° ALL SURFACES ✓		<div> LEPP</div> <div>CORNELL UNIVERSITY Floyd R. Newman Laboratory Ithaca, NY 14853</div> <div>LABORATORY FOR ELEMENTARY-PARTICLE PHYSICS</div>							
		ERL Phase I, Corrector for Cryomodule Corrector Large Coil Winding Jig Details									
	REV.	CHECKED BY: Yulin Li APPROVED BY: Yulin Li	DRAWN BY TMK	DRAWN FOR YL	DATE 1/10/2007	SCALE		7102-062 SH. NO. 6 OF 6		REV.	